



European government bonds
on Tradeweb PLUS

TW PLUS See more.



Access live, attributed, executable prices for European government bonds quickly and directly using Tradeweb PLUS.

Choose a security and then view all your enabled dealer levels for that bond on one screen, **sorted by best price**.

This new feature seamlessly links the request-for-quote (RFQ) protocol that Tradeweb already offers with PLUS, bringing even greater efficiency and price discovery to trade execution.

SEE MORE.

The new offering screen

Lists all your dealers' prices in a specific bond, sorted by best bid / offer.

Selecting dealers in this screen will populate the RFQ ticket automatically.

See where liquidity is, all on one screen.

The screenshot shows the offering screen interface. At the top, there are filters for Country (DE, FR, NL, AT, EL, BE, IT, ES, PT, IE, GR, UK) and Maturity (0.25, 0.5, 0.75, 1, 1.5, 2, 3, 5, 7, 10). A Quick Search field contains 'DE0001135424'. Below the filters is a table of dealer prices. The table has columns for Dealer, Desc, Cpn, Mty, Qty/B (000), Bid Price, Offer Price, Qty/O (000), Bid Yield, and Offer Yield. The rows are sorted by Bid Price, with DLRW having the lowest bid price of 103.848.

Dealer	Desc	Cpn	Mty	Qty/B (000)	Bid Price	Offer Price	Qty/O (000)	Bid Yield	Offer Yield
DLRW	DBR	2.500	04/01/21	18,000	103.848	103.967	30,000	2.270	2.264
DLRZ	DBR	2.500	04/01/21	30,000	103.828	103.985	18,000	2.280	2.261
DLRY	DBR	2.500	04/01/21	5,000	103.792	103.996	6,000	2.284	2.260
DLRA	DBR	2.500	04/01/21	21,000	103.778	103.843	6,000	2.286	2.278
DLRX	DBR	2.500	04/01/21	27,000	103.775	103.806	30,000	2.286	2.283
DLRD	DBR	2.500	04/01/21	24,000	103.741	103.913	21,000	2.290	2.270
DLRC	DBR	2.500	04/01/21	5,000	103.726	103.877	3,000	2.292	2.274

Select dealers by clicking on their acronym – this will automatically update the RFQ ticket.

Tradeweb PLUS now allows you to:

Enhance price discovery

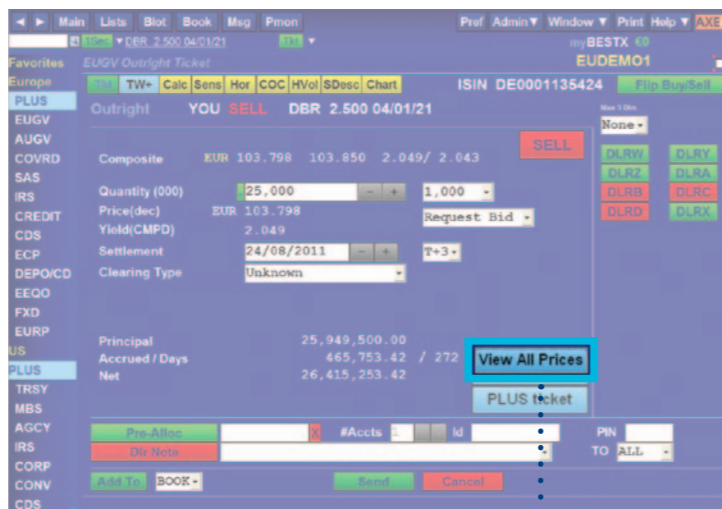
Access attributed, live, executable prices quickly and directly. Complete transparency allows you to see where liquidity is available.

Consolidate workflow

Use the attributed, live, executable pricing to validate dealer choices for RFQ auctions, or simply click to trade.

Select your preferred execution method

Tradeweb PLUS lets you switch between click-to-trade and RFQ, providing a fully flexible workflow. It helps you choose the most relevant dealers, and validates your pricing by highlighting the dealers who respond best for you and your peers.



Click the 'View All Prices' button to open the new window showing liquidity levels for that bond, sorted by best price.



A leaner and more precise method of working

Tradeweb PLUS eliminates the need for information searching by phone or through other portals, by providing a much faster, more efficient and meaningful workflow.



Help with compliance and integration

Tradeweb's European government bond platform is designed to help clients follow best execution policies and works with many existing order management systems and/or post-trade integrated flows used today. All trades are supported by detailed digital record keeping.

Dealers on Tradeweb

Tradeweb is designed for institutional, buy-side investors, giving dealers the confidence to show aggressive price levels on the platform. Dealers choose which clients are able to see their live, executable prices, and can differentiate between clients, avoiding the frustrations of generic pricing.

Tradeweb PLUS. See more.



1. Look

Country: Quick Search:

Maturity:

Show benchmarks only

Dealer	Desc	Cpn	Mty	Qty/B (000)	Ask Price	Offer Price	Qty/O (000)	Bid Yield	Offer Yield
DLRW	DBR	2.500	04/01/21	18,000	103.848	103.967	30,000	2.270	2.264
DLRZ	DBR	2.500	04/01/21	30,000	103.828	103.985	18,000	2.280	2.261
DLRY	DBR	2.500	04/01/21	5,000	103.792	103.996	6,000	2.284	2.260
DLRA	DBR	2.500	04/01/21	21,000	103.778	103.843	6,000	2.286	2.278
DLRX	DBR	2.500	04/01/21	27,000	103.775	103.806	30,000	2.286	2.283
DLRD	DBR	2.500	04/01/21	24,000	103.741	103.913	21,000	2.290	2.270
DLRC	DBR	2.500	04/01/21	5,000	103.726	103.877	3,000	2.292	2.274

New Tradeweb PLUS pricing window

Selecting dealers here will automatically populate the RFQ ticket

2. Click

ISec DBR 2.500 04/01/21

myBESTX €0 EUDEMO1

ISIN DE0001135424 Flip Buy/Sell

Europe PLUS

EUGV Outright YOU SELL DBR 2.500 04/01/21

None

EUR 103.798 103.850 2.049 / 2.043

Quantity (000) 25,000 1,000

Price(dec) EUR 103.798 Request Bid

Yield(CMPD) 2.049

Settlement 24/08/2011 T+3

Clearing Type Unknown

Principal 25,949,500.00

Accrued / Days 465,753.42 / 272

Net 26,415,253.42

View All Prices

PLUS ticket

DLRW DLRZ DLRX DLRB DLRA DLRC

RFQ ticket

3. Trade

ISec DBR 2.500 04/01/21

myBESTX €0 EUDEMO1

Europe EUGV Trade Negotiation

SELL 25,000 DBR 2.500 04/01/21 ON 24/08/11

Composite Quote: 103.798 103.850 2.049 / 2.043 ISIN DE0001135424 0:11

Submitted Quote: 103.796

Trd	Dir	State	Quantity (000)	Yield	Price EUR	Action	End	Time
200	DLRW	Dir-QteUp	25,000	2.067	103.831	HIT	END	0:02
208	DLRY	Dir-Quote	25,000	2.052	103.851	HIT	END	0:04
60	DLRZ	Dir-QteUp	25,000	2.062	103.791	HIT	END	0:03
26	DLRA	Dir-QteUp	25,000	2.070	103.721	HIT	END	0:07
19	DLRX	Dir-QteUp	25,000	2.065	103.761	HIT	END	0:07

Dealer Message

Trade negotiation screen

Tradeweb

Europe

+44 (0)20 7776 3200

europe.clientservices@tradeweb.com

North America

+1 800 541 2268

help@tradeweb.com

Asia

+81 (0)3 6441 1020

contact.asia@tradeweb.com

www.tradeweb.com

© 2011 Tradeweb Markets LLC. All Rights Reserved

The information contained in this communication has been issued in the U.K. by Tradeweb Europe Limited, which is authorised and regulated by the Financial Services Authority, in Japan by the Financial Services Agency, in Hong Kong by the Securities and Futures Commission, and in Singapore by the Monetary Authority of Singapore.

If you do not wish to receive marketing materials from us about the products and services we provide, or if any of your contact details are incorrect, please contact us at europe.clientservices@tradeweb.com. To view our full privacy statement, please go to <http://www.tradeweb.com/misc/privacy>